

Warrawee Woman's Bowling Club

Gallery of Presidents

IN THE BEGINNING

For many, many years, Warrawee was a Club for gentlemen bowlers only.

However, that is not to say that there were not numerous attempts to introduce ladies to the Club. These attempts were thwarted, time and time again by a majority of traditional, hard-line male members.

By the time 1970 came around, the subject had been debated many times and defeated at three, recent Extraordinary General Meetings. That is not to say that the attempts were completely without support.

At the time, the Club's Constitution required a majority of 75% to carry it across the line and each time, the proposals fell just short of the mark.

In late 1970, the Club's Board received a submission from some members, to consider the formation of a women's bowling club, within the existing structure of Warrawee Bowling Club.

This was approved in principle by the Board and a sub-committee was formed, to progress the matter. As an initial step, interested women were invited to join the Club. These women were mainly wives or close family members of the male bowlers.

On 20th December 1971, a notice of a General Meeting was sent out to the 99 women who had joined the Club. The meeting was held on 18th January 1972 and was attended by 72 women.

The proposal to establish Warrawee Women's Bowling Club was adopted and a Steering Committee was elected. This committee included future Presidents Edna Wolff and Helen Millard.

The first Annual General Meeting of Warrawee Women's Club was held on Tuesday 8th February 1972 and the following Office Bearers were elected:

President:	Edna Wolff
Vice-presidents:	Helen Millard, Mary Fenton, Enid Jarrett
Secretary:	Mary Helliwell
Treasurer:	Sheila Collie

Bowling operations commenced almost immediately but the official opening was not held until Thursday 22nd June 1972. This was presided over by Bea Vincent, President of the NSW Women's Bowling Association.

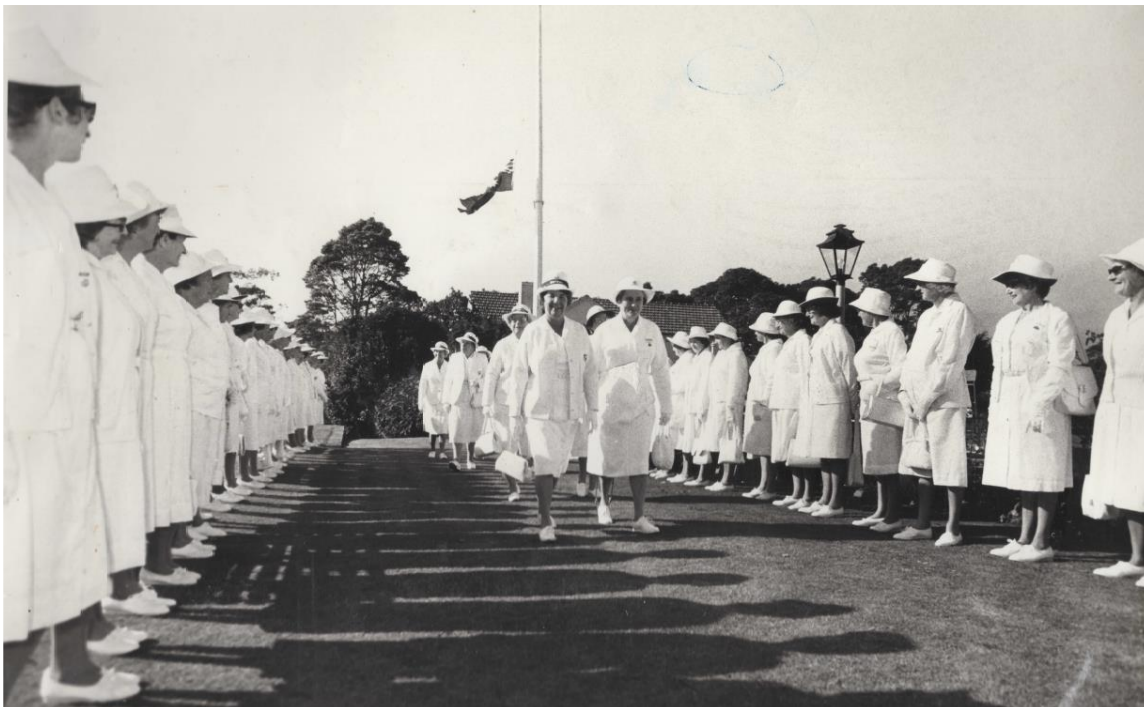
The fledgling Club enjoyed early success with membership climbing to 133 *at the time of the opening*. A lot of these bowlers came from Ku-ring-gai Bowling Club which was located in Killara.

Interest in the Pennant competition was high with the Club entering three teams in 1972. In the following year, the Grade 1 team came equal first in their section but did not make it through the post-sectionals.

Throughout the years, Warrawee teams acquitted themselves well, often running first in their sections.

However, they had to wait until 1989 before winning their first Pennant, in Grade 2.

THE OPENING



***NSWWBA President Bea Vincent and Foundation President Edna Wolff
walk through a Guard of Honour of members
at the official opening of Warrawee Women's Bowling Club
22nd June 1972***



Helen Millard
Vice-president
WWBC

Doug Schahinger
Secretary
WBC

Bea Vincent
President
NSWWBA

Edna Wolff
President
WWBC

Ron Millard
President
WBC

***Official table at the dinner
Celebrating the opening of Warrawee Women's Bowling Club
22nd June 1972***

THIS TREATISE

This treatise celebrates the contributions made by Presidents of Warrawee Women's Bowling Club, from the start to the present day.

The Club owes a debt of gratitude to past scribes, who have kept immaculate records, including photographs. Unfortunately, many of the photographs were taken by well-meaning, amateurs using primitive cameras. These cameras obviously did not have auto-focus and as you will see, focus is lacking in some of the photos.

As the compiler of this dissertation, I would like to express my appreciation to Heather Bradley. Heather facilitated my access to the Club's archival material and also made available her personal photo albums. Thank you Heather!

Another avenue of useful information was the Centenary Chronicle prepared by Jackie Wilson in 2007. Her Chronicle provided me with a convenient framework around which to organise my thinking. Thank you Jackie!

Thanks also to Heather Lovell, Sue O'Keefe and some un-named ladies who helped identify some of the Past-presidents in group photographs,

We all know that history does not stand still. I hope that my successors will continue to keep this chronology updated.

Hillar Poder

Secretary, Warrawee Bowling Club
December 2020.

THE PRESIDENTS



EDNA WOLFF
1972-74



HELEN MILLARD
1974-76



SHEILA COLLIE
1976-78



FRANCES CRUIKSHANK
1978-80



BETTY RICHARDS
1980-82



DAPHNE PARROT
1982-84



DORIS BOWDEN
1984-86



PAT LYNCH
1986-88



Sheila Collie Doris Bowden Betty Richards
 Edna Wolff Helen Millard

***WWBC Presidents - taken on President's Day – 13th March 1986
 When Doris was President***



Daphne Parrott Betty Richards Sheila Collie Doris Bowden
 Edna Wolff Pat Lynch Helen Millard

***WWBC Presidents - taken on President's Day – 30th June 1988
 When Pat was President***



JOAN HIPSLEY
1988-90



VERNA McCOURT
1990-92



JOAN MENCK
1992-94



SHIRLEY MEADES
1994-96



JOY HIPPISELY
1996-98



PEGGY BROAD
1998-99



JEAN MILLINGTON
1999-2000



PAM MULVEY
2000-02



HEATHER LOVELL
2002-04



PIPPY METCALF
2004-06



SUE O'KEEFE
2006-08



LEONIE NEVILL
2008-10



HEATHER BRADLEY
2010 12 2016-18



ANNETTE RENSHAW
2012-15



JACKIE WILSON
2015-16



JAN SIMPSON
2019-



WWBC Presidents Heather Bradley – Pippy Metcalf – Sue O'Keefe
Competing together in 2007



WWBC Presidents Heather Bradley and Sheila Collie
Foundation Day 2011



WWBC Presidents Heather Lovell – Joan Menck – Heather Bradley
Foundation Day 2017



WWBC Presidents Annette Renshaw – Heather Bradley – Jackie Wilson – Sue O'Keefe
Competing together 2013

EPILOGUE

The playing status of women, during the early days of the Club is unclear.

It is documented that at the official opening of the Club, on Saturday 7th September 1907, the sports of lawn bowls, croquet and tennis were played.

Photographs from the day show women playing both croquet and tennis but not bowls. It is understood that interest in croquet and tennis waned through the years and were discontinued at some time in the 1930s.

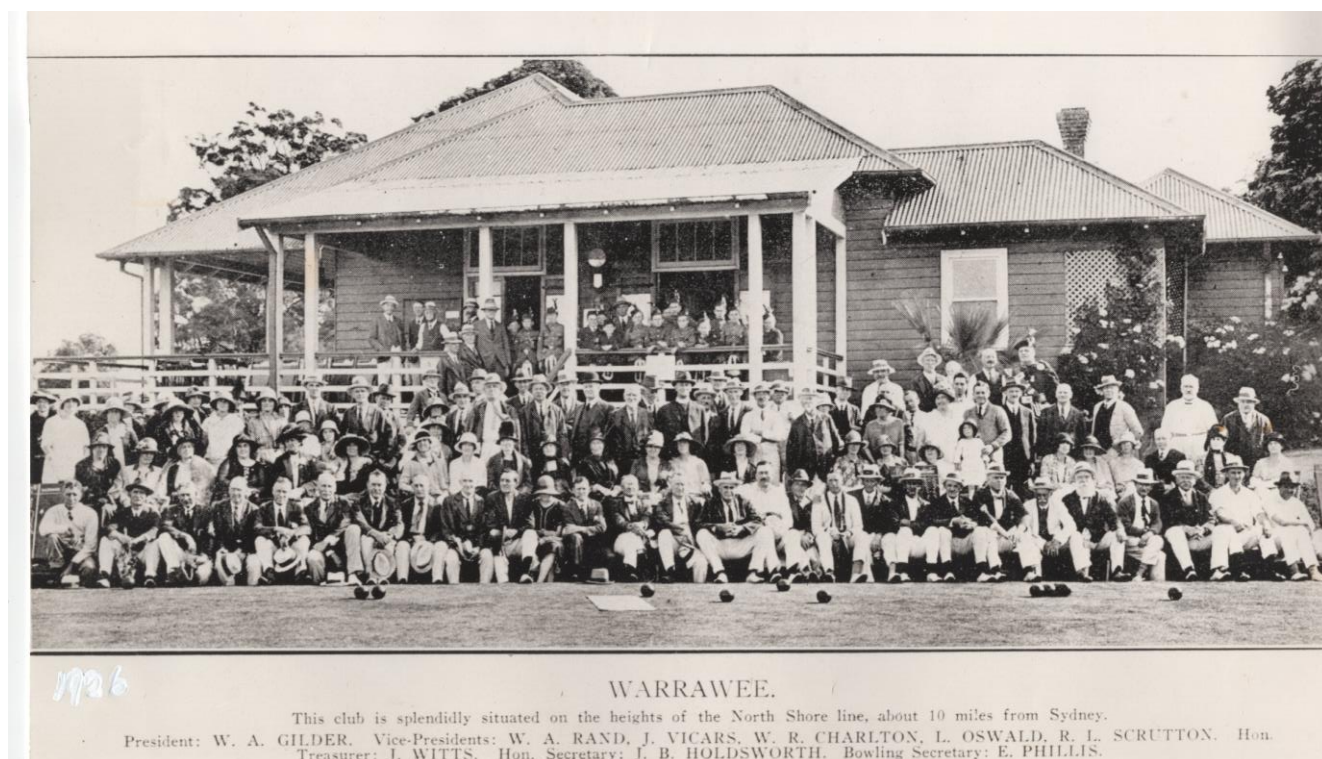
Official Club records suggest that from this point, there were no female members remaining in the Club.

Prior to the establishment of Warrawee Women's Bowling Club in 1972, mention is made of occasional events involving the ladies.

This included hosting the Women's State Championships in 1960 and the NSWBA Country Week in 1963.

Between 1964 and 1970, there was also occasional holding of Mixed Fours on Sundays.

However, this appears to be at odds with a couple of photos I found in our dusty archives.



Warrawee members 1926

The entire second row in this photo is comprised of ladies. There is also a group of ladies standing at the rear, on the left.

I wonder what the gentleman in full Highland regalia, to the right of the porch, was up to?

At the time, both croquet and tennis were being played, as well as bowls. It is not known if any of these ladies were bowlers, or just croquet or tennis players,



Warrawee Bowling Club members 1928

This photo, taken two years later, is quite un-ambivalent. The ladies in this photo seem to be very serious about bowls.

Interest in croquet and tennis had started to wane and it is in this year, that the Club changed its name from Ku-ring-gai Recreation Club to Warrawee Bowling Club.

History continues to amaze.

TO BE CONTINUED...